

Medical Data + NMDOH Data: Oh, the Places You'll Go!



Dr. Cecilia

Ganduglia Cazaban

*Associate Professor, Co-Director
of the Center for Health Care
Data, UT Houston School of
Public Health*



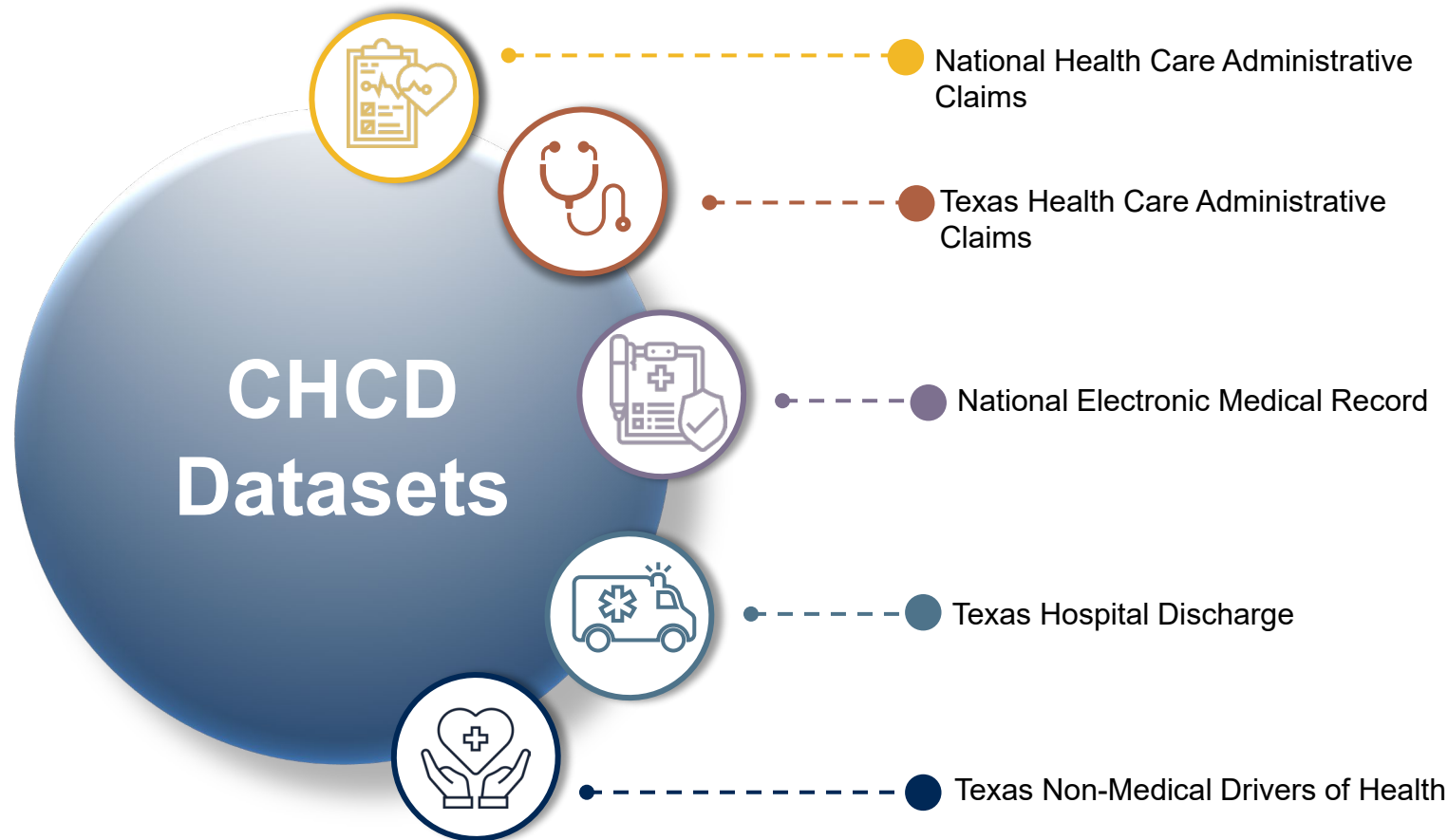
Medical Data and NMDOH Data: Oh, the Places You'll Go!

Cecilia Ganduglia Cazaban MD DrPH, Co-Director

Caroline Schaefer, MPH, Data Scientist

UTHealth Center for Health Care Data (CHCD)

- **Largest, research-accessible,** healthcare data repository in Texas
- **Applying expertise** in analytics, clinical medicine, public health, management, and public policy
- **Supporting Research, Education, and Public Service** to improve the health of our communities



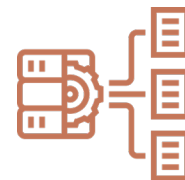
Texas All-Payor Claims Database (TX-APCD)

The Texas All-Payor Claims Database is ...



Collection of Administrative Claims

A database that collects medical, dental, and pharmacy claims from “all” payors in a state.



Standardized Data

The claims are obtained using a standardized format – the Common Data Layout.



Research Accessible Database

The claims are then organized into a researcher-accessible format and database.

Putting Data to Work

We work with a broad range of groups to make data accessible and useful.

Collaborators

- Researchers
- Foundations
- Government Agencies
- Healthcare Organizations
- Non-Profit Organizations
- And more...

Service Projects

- The 5 Agency Project
- Lone Star Stroke Research Consortium
- Texas Health Equity Alliance for Breast Cancer

Evaluation Projects

- Healthy Texas Women
- EQRO
- Project HOMES
- Evaluation of Affordable Housing Provider and a Managed Care Organization
- Effect of NMDOH on HEDIS Measures

Research Projects

- Accountable Health Communities
- Polypharmacy and hospital readmission
- COVID-19 Severity Scale

Dashboards and Databases

- COVID-19 Database
- Non-Medical Drivers of Health Database
- The Health of Texas Dashboard
- TX-APCD Database

Non-Medical Drivers of Health Webpage

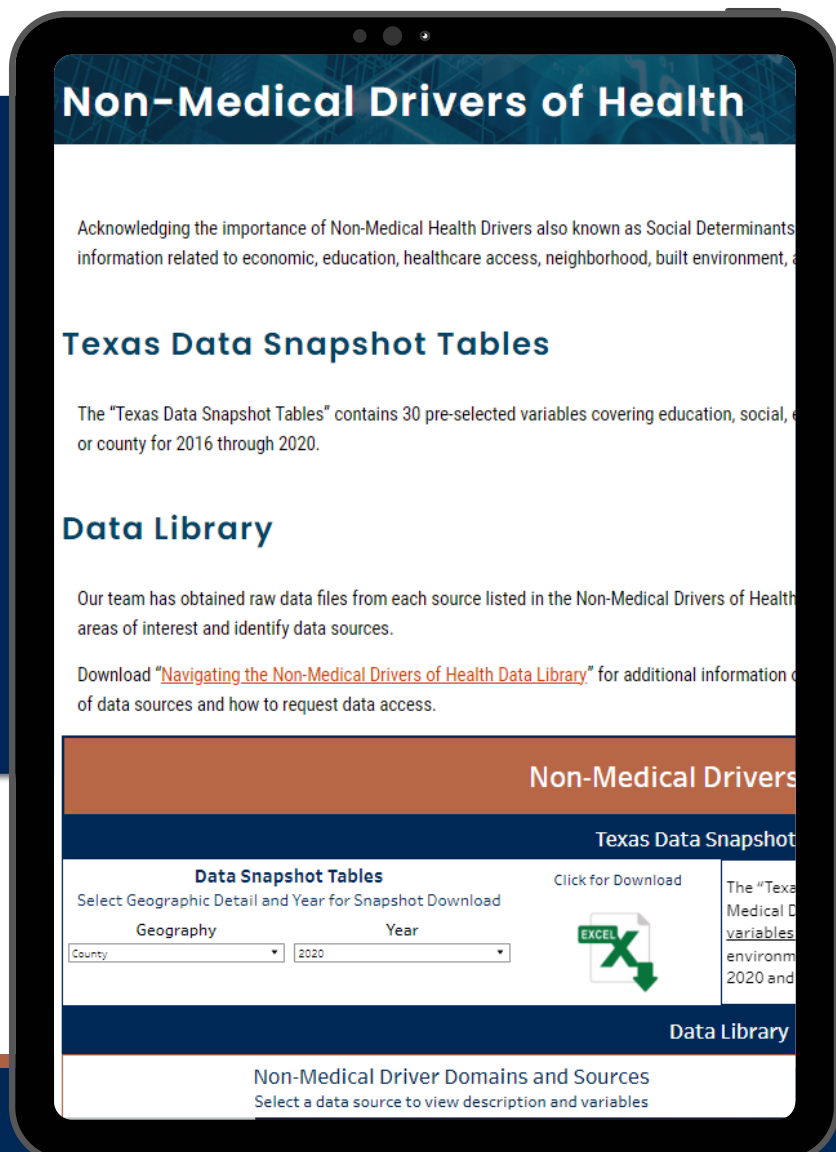
The CHCD launched a webpage dedicated to NMDOH resources.

Texas Data Snapshot Tables

- **30 pre-selected variables** covering NMDOH topics.
- Files can be downloaded by zip code or county
- Years range from 2016 to 2020

NMDOH Data Library

- Full data list available
- Filter by category, geographic area, and keywords (e.g., income)
- Provides a list of variables for each data source



[Go.uth.edu/CHCD-NMDOH](https://go.uth.edu/CHCD-NMDOH)

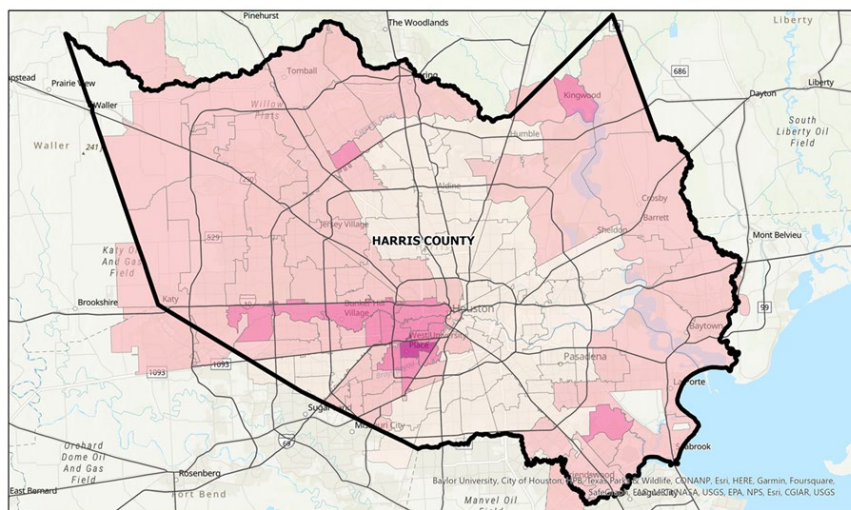


Innovation through Collaboration

Texas Health Equity Alliance for Breast Cancer (THEAL)

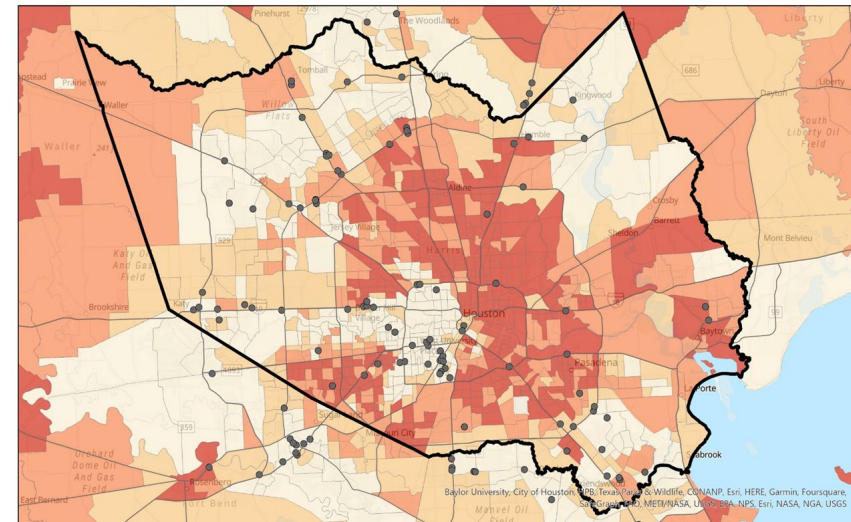
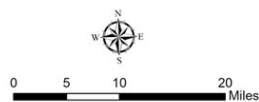
A multi-sector collaborative focused on reducing breast cancer disparities in Greater Houston by activating a tested impact model founded in the principles of **cross-sector collaboration**, **systems-strengthening**, and **aligned multilateral impact**.

PIs: Lorna McNeill, Ph.D., MPH & Michael T. Walsh, Jr., MHA



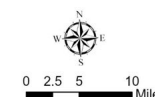
Mammogram Screening Rates Among Medicare Fee for Service Members in 2019, by ZIP Code

- 0% - 20%
- 20% - 40%
- 40% - 60%
- 60% - 80%
- 80% +



CDC Social Vulnerability Index Scores, by Census Tract • MSQA Certified Mammography Providers

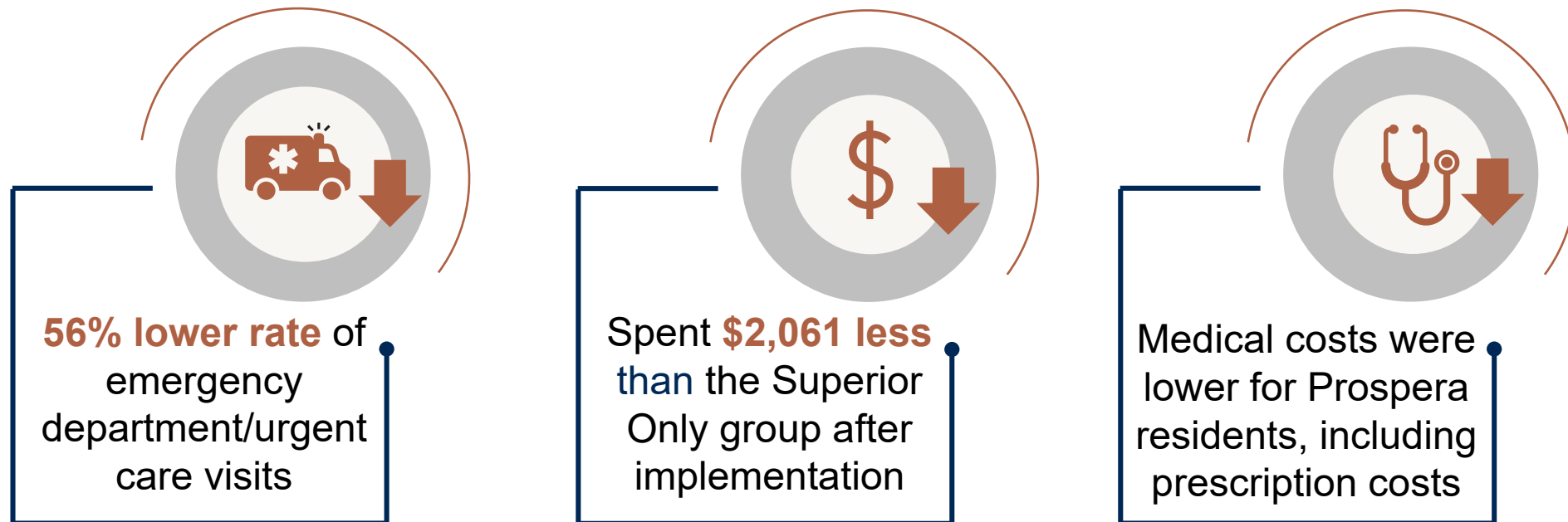
- 0 - 0.25 (Low Social Vulnerability)
- 0.25 - 0.50
- 0.50 - 0.75
- 0.75 - 1.00 (High Social Vulnerability)



An Evaluation of a Collaborative Service Model

The **Prospera+Superior collaborative model** allowed for facilitated and joint programs to improve health's social determinants, including access to nutritious foods, transportation, affordable health care, and secure housing.

PI: Jack Tsai, Ph.D.; CO-Is: Cecilia Ganduglia Cazaban MD, DrPH, Suja Rajan, Ph.D. Vanessa Schick, Ph.D.



Thank you!

- Visit our booth and say Hi!
- Meet CHCD team members
- Discuss the advantages of using our data resources for your next project
- Demo the NMDOH dashboard

Special thank you to our collaborators!

THE UNIVERSITY OF TEXAS
MD Anderson
Cancer Center
Making Cancer History®

EHF
EPISCOPAL HEALTH
FOUNDATION

PROSPERA®
HOUSING COMMUNITY SERVICES

superior
healthplan™

CMS
CENTERS FOR MEDICARE & MEDICAID SERVICES